



**THE SARATOV REGION  
CHOOSES THE LEADERSHIP**



## **DEAR LADIES AND GENTLEMEN!**

On the way to the leadership, we manage priorities and incrementally, step by step, pursue objectives to be achieved.

Our key arguments – great competitive advantages, frankness and honest dialogue with potential investors.

We dispose ourselves for discussion and offering mutual agreed conditions to all who intend to work the way and develop a business in our region.

I welcoming you to the long-term and mutually beneficial cooperation. I am convinced that the Saratov region will open new horizons for the development of your business!

**V. V. RADAEV**  
**GOVERNOR OF THE SARATOV REGION**





POPULATION –  
**2 493 024**  
PEOPLE





## COMPETITIVE ADVANTAGES

- High level of human and scientific resources
- Vantage location and developed logistics
- More than 300 investment sites of various applications available
- 5 industrial parks including agro-industrial and logistic
- Prompt infrastructure supply
- Distinguished resource base





## THE SARATOV REGION CHOOSES THE LEADERSHIP

- Propitious soil and climate conditions
- Low prime cost for housing, industrial and commercial premises construction
- Inherent regional gas production, implicit gas distribution to populated areas and factories





## THE SARATOV REGION CHOOSES THE LEADERSHIP

### SCIENTIFIC RESOURCES:

- **21** higher education establishments
- **42** innovative enterprises affiliated with HEI
- **57** educational facilities of intermediate vocational education
- **7** institutions and branches of Russian Academy of Science
- **27** specified researched and development establishments







## HUMAN RESOURCES:

- Working-age population – **1,5 mln people**
- Commercial activity – **1,2 mln people**
- University-educated working age populations – **30%**







## TRANSPORT INFROSTRUCTURE

- The Volga river – water network with passages to Mediterranean, Baltic and Barents seas
- River harbor
- 9 federal highways
- Airport
- South-Eastern and Volga railways
- Developed municipal transport network

## THE SARATOV REGION CHOOSES THE LEADERSHIP





Construction of international airport  
«Centralny»

The new airport provides possibilities for reception of all-type of modern long-distance vessels, increasing volumes of passenger and cargo traffic. The flight strip size – **3000x45 m**, acceptance rate – up to **1 mln** passengers per year.  
**Commissioning date – 2018.**



## Construction of Western bypass of the Saratov transport hub of Volgian railway

- Possibility for increasing of suburban rail within the Saratov city
- Development of extra volume of cargo traffic via Saratov hub – **46,0 mln tons**, including:  
30 mln tons towards Azov-Blacksea harbors
- Relocation of hazardous cargo traffic







**Energy hub** comprising of Saratov HPS, Balakovo NPP and CHP-4 **is the largest hub** in Russian Federation.

**Balakovo NPP** – provides a quarter of electrical power generation in Volga Federal District and a fifth part of Russian NPPs' capacity

**TOTAL PGP CAPACITY – 6702 MW,**  
**TOTAL REGIONAL CONSUMPTION – 30%**

**Saratov HPP** is a huge regional power asset with annual output **of 5,4 bln kW-h**



## **NON-DEMANDED MINERAL RESOURCES:**

- Chalk- and lime-stone
- Argillaceous gangue for brick, bloating clay and concrete manufacturing
- Grit and sandstone
- Balneological, medicinal and table mineral water of high quality
- Potassium and magnesium salts
- Sulfurs
- Phosphorites
- Siliceous rocks

## **FIRST GAS PIPELINE**

“SARATOV-MOSCOW” IN RUSSIA

## **POTENTIAL RESOURCES**

**GAS – 1 trn cubic meters**

**OIL – 700 mln tons**







## THE SARATOV REGION CHOOSES THE LEADERSHIP



### STRATEGIC PRIORITIES:

- Innovations and science
- Chemical complex
- Information technology
- Natural resources efficiency
- Agricultural product processing
- Construction industry
- Fuel-power complex
- Tourism



## THE SARATOV REGION CHOOSES THE LEADERSHIP

### ACCOUNTS FOR THE SARATOV REGION:

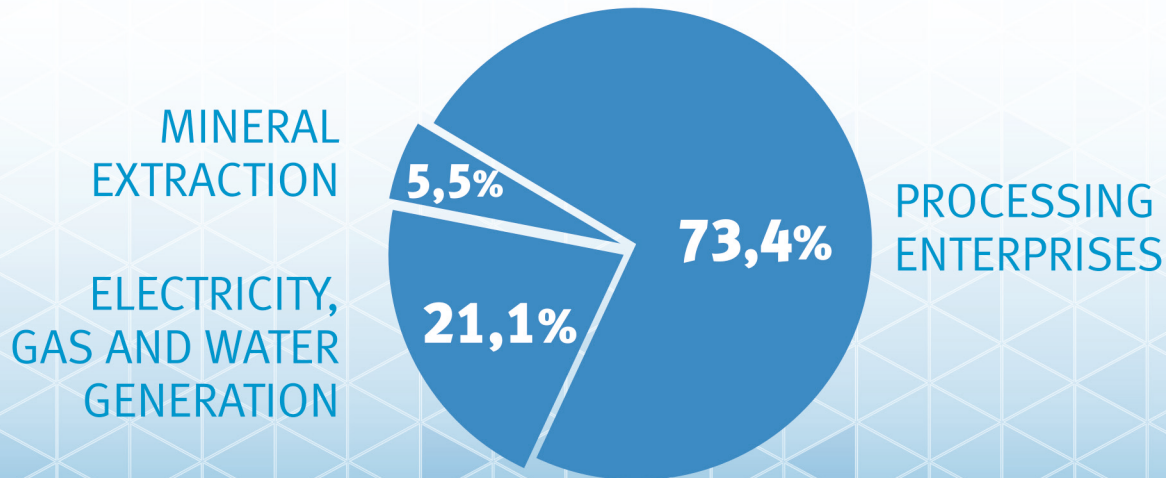
- **84%** of Russia trolley manufacturing
- **43,2%** of couch manufacturing
- **20%** sulfuric acid manufacturing
- **14%** of ball-bearing manufacturing
- **9%** of tobacco products





THE SARATOV REGION CHOOSES THE LEADERSHIP

## INDUSTRIAL STRUCTURE:







## **PETROCHEMICAL CLUSTER**

The Saratov region is one of the longest-standing oil and gas producing regions in Russian Federation. Inherent oil production followed by complete oil processing provides unconditional stability and independence of regional fuel market



**METALLURGICAL CLUSTER:**

PJSC "SEVERSTAL"

JSC "BALAKOVO-CENTROLIT"

LLC "ER LIQID BALAKOVO"

A new field of metallurgical  
engineering is completely functional





## THE SARATOV REGION CHOOSES THE LEADERSHIP

### TRANSPORT ENGINEERING

- **LLC “First Locomotive Company”**  
Design and manufacture of double-system cargo locomotive of the project F120MS for the Russian and CIS countries markets
- **OJSC “Steelworks Plant”**  
Manufacture of cargo rolling stock.  
6 000 of units have been manufactured and sent to customers since 2005
- **OJSC “Transmash”**  
Manufacture of carriage, maintenance and snow-clearing equipment.  
Manufacture of 3 000-3 500 cargo carriages per year
- **JSC “Carriage-building plant”**  
Manufacture of carriage-building equipment for the value of 150 mln RUB per month





## PRIVATE INDUSTRIAL PARK “TROLZA”

The Park is located on the territory of industrial zone in Engels (the Saratov region) and occupies the area of **40 ha.**

**Built-up density – 55%.**



## THE SARATOV REGION CHOOSES THE LEADERSHIP

INDUSTRIAL  
LOGISTIC  
COMPLEX  
**“LEADER”**

**READY-MADE** INDUSTRIAL  
AREA FOR MODERN  
MANUFACTURING  
PREMISES



TOTAL  
BUILDING AREA  
**70 THOUSAND  
SQ.M.**



TOTAL  
LAND AREA  
**25 ha**





## INDUSTRIAL PARK “REFLECTOR”

Total area – **2,2 ha**

The territory equipped with a complex of manufacturing, office and utility premises with all necessary communications.

Optoelectronics, lighting, video- and electric technology manufacturing management.



## MANUFACTURING COMPLEX OJSC “ROSBYTHIM”

- Complex area – **5 ha**
- The territory equipped with a complex of manufacturing, office and utility premises with all necessary communications
- Household cleaning products manufacturing management
- More than 12 ha of “Greenfield” areas available







THE SARATOV REGION CHOOSES THE LEADERSHIP

## WE ARE TRUSTED BY FOREIGN INVESTORS





## THE SARATOV REGION CHOOSES THE LEADERSHIP

### AGRICULTURE IN 2016:

- **1<sup>st</sup> place** for gross post-treatment grain harvesting in Volga Federal District (4210,1 thousand tons),  
**7th place in Russian Federation**
- **1<sup>st</sup> place** place for gross sunflower seeds harvesting in Volga Federal District (1188,0 thousand tons),  
**2nd place in Russian Federation**
- **1<sup>st</sup> place** for gross vegetables harvesting in Volga Federal District (416,5 thousand tons),  
**10th place in Russian Federation**



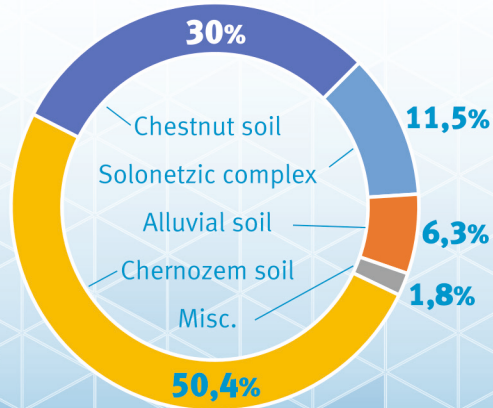


## THE SARATOV REGION CHOOSES THE LEADERSHIP

### FOCUS AREAS FOR INVESTMENTS:

- Dairy cattle breeding
- Beef cattle breeding
- Poultry breeding
- Technical crops manufacture
- Pulse crop manufacture
- Hothouse facilities
- Construction of logistics center for vegetables processing and storage
- Processing of products for agriculture

SOIL STRUCTURE  
OF THE SARATOV REGION



### AGRICULTURAL INVESTMENT ADVANTAGES:

- Availability of lands of agricultural designation and its' low cost
- Mild favorable climate
- High scientific potential in agricultural field
- Market familiarity



## GROUND-PROTECTED VEGETABLES

- **2<sup>nd</sup> place** in Volga Federal District and Russian Federation for ground-protected vegetables
- 7 hothouse facilities in area of **112,8 ha**
- OJSC “Vesna” farm”, LLC “REHN”, LLC “Otdyh 2010”, LLC “MG Group”, LLC “AGA+”, OJSC “Volga”, LLC “Leto-2002”







THE SARATOV REGION CHOOSES THE LEADERSHIP

## FOOD AND PROCESSING INDUSTRY





## THE SARATOV REGION CHOOSES THE LEADERSHIP

### AGRICULTURE PARK “AUGUST”



Total area – **32 ha**  
Building area – **3,686 ha**  
Misc. area – **8,396 ha**



## MANUFACTURING COMPLEX LLC “VOLJSKY TERMINAL”

- Total complex area – **35 ha**
- The territory equipped with a complex of manufacturing, office and utility premises with all necessary communications
- Agricultural materials processing, storage and distribution of cereal, oilseeds and bean crops
- More than 12 ha of “Greenfield” areas available





## PUBLIC AND PRIVATE PARTNERSHIP:

- **LLC “ Fresenius Medical Care Holding”**

Establishing of medical dispensary  
dialysis Center

- Balakovo municipal district
- Saratov

- **CG “Renova”**

Construction of International airport  
“Centralny”







## THE SARATOV REGION CHOOSES THE LEADERSHIP



- **Managing Company “Lider” – CJSC “Wastes management”**

Establishing of a system for processing and utilization of solid domestic wastes.

The project joints the rank of the best regional practices in Housing and Utility Infrastructure in Russian Federation

**33<sup>rd</sup> place in regional rating  
by level of public  
and private partnership development**



THE SARATOV REGION CHOOSES THE LEADERSHIP

## TAX ADVANTAGES FOR INVESTORS

REMISSION  
OF TRANSPORT TAX  
**for 5 years**

**0%**

PROFIT TAX DEDUCTION  
IN REGIONAL BUDGET REVENUE  
**from 18% to 13,5%**  
**for 5 years**

**18%**

**13,5%**

ESTATE TAX DEDUCTION  
**from 2,2% to 0,1%**  
**for 5 years**

**2,2%**

**0,1%**

**BENEFITS ARE ALSO PROVIDED TO INVESTORS  
WITH A SPECIAL INVESTMENT CONTRACT AND PPP AGREEMENT**

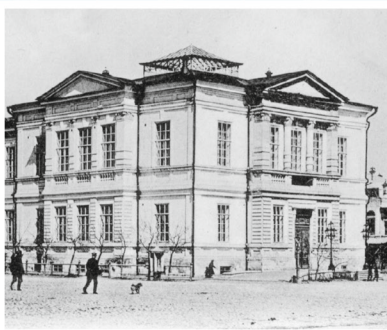


## THE SARATOV REGION CHOOSES THE LEADERSHIP

### FIRST RUSSIAN CIRCUS



### FIRST PROVINCIAL CONSERVATORY



### FIRST MUSEUM OF ARTS

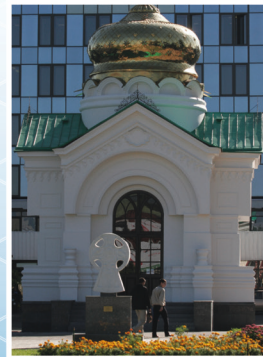
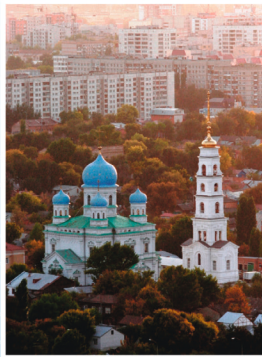




## THE SARATOV REGION CHOOSES THE LEADERSHIP

### WITHIN THE REGION

- **124** natural monuments
- more than **300** architectural monuments
- over **3000** archeology monuments
- **18** remained antique manors
- **26** state museums





## THE SARATOV REGION CHOOSES THE LEADERSHIP

### CONTACTS:

**First deputy** prime-minister  
of the Saratov region

**STRELUKHIN**

**Alexander M.**

Phone: +7 (8452) 210-212



**COMMITTEE**  
**on investment policy**  
**and property matters**  
**of the Saratov region**

**Minister** – Chairman of the Committee on  
investment policy  
and property matters of the Saratov

**GALKIN**

**Oleg A.**

Phone: +7 (8452) 391-193



30, Radisheva street,  
Saratov, Russian Federation, 410042  
Phone: **+7 (8452) 391-193**  
[comimm@saratov.gov.ru](mailto:comimm@saratov.gov.ru)



---

THE SARATOV REGION CHOOSES THE LEADERSHIP

---

**WE ARE LOOKING FOR COOPERATION**

[investinsaratov.ru](http://investinsaratov.ru)